



*The heart of the Kentucky River*

# Suggested Itinerary

## KY River Weekend

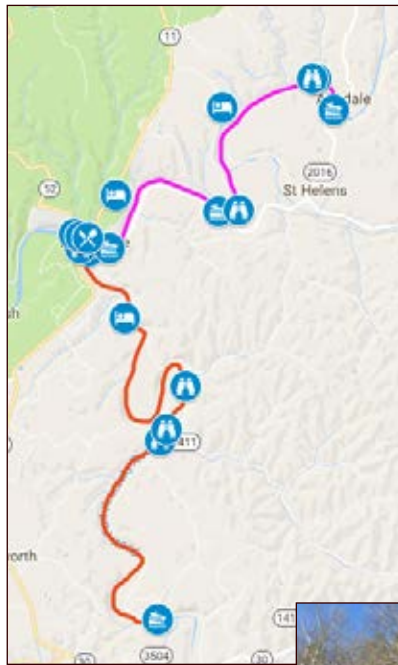
*Welcome to Beattyville, KY located 20 minutes South of the Red River Gorge and Natural Bridge State Park. There are many adventures waiting for you on the scenic Kentucky River! If you want to spend the weekend on the water here is some suggestions that will make your trip unforgettable!*

### FRIDAY (Arrival)

The *Oxbow Family Inn* ((606) 464-9347 located on Southfork Road is perfect for your paddle group or family stay. This beautiful cabin can sleep 8 people and has private access to South Fork of the Kentucky River. After checking in, start your adventure with a 2 mile paddle into town from the cabin and visit *Jack's IGA* for groceries before paddling back to the cabin.

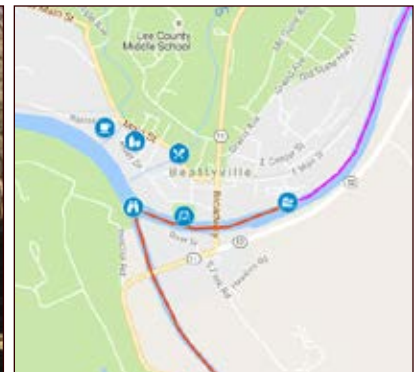
### SATURDAY

After a hearty breakfast at the cabin or stopping at the *Chocolat Inn & Cafe* (606) 260-0918 on HWY 11 South toward Booneville, go on our 10 mile paddle trail. Launch from the Booneville Boat Ramp off of Fish Creek Road in Booneville, KY and paddle downstream to the Beattyville Boat Ramp. There is not a house to be seen for miles as this trail is breathtaking. Stop for a picnic lunch and stretch your legs at Buffalo or PawPaw Shoal around mile 5. Spend all day on the river canoeing or kayaking along this scenic trail and be sure to take your fishing gear to fish along the way. The best part is that the trip will end back at the Oxbow Family Inn. After resting and showers, eat out for dinner at *Brenda's BBQ Smoke Shack* (606) 272-0969 located on East Main Street in Beattyville.



### SUNDAY (Departure)

Squeeze in another paddle trip on the Kentucky River before heading back home. Park at the Canoe/kayak Launch property behind Jack's IGA on River Drive in Beattyville and pay **Bill Pitman** (606) 464-8797 at the Small Engine Shop next door to transport your boats and paddlers to the Airdale Bridge off HWY 2016. This 6 mile paddle is another scenic trip. Launch from the river rock boat ramp under the Airdale Bridge and paddle downstream to your car in Beattyville. Along this trail, you will see the bridge tressle remnants of the 1890s L&N Railroad Line and pass under the Maloney Railroad Bridge. Be sure to float at the Birthplace of the KY River, where North Fork and Middle Fork River's merge in Beattyville, KY.



"Nothing is now needed but the extension of this grand improvement to the three forks of the Kentucky River to make it the best, cheapest, and one of the most profitable public works in the United States. By this extension the mineral wealth of our mountains will be made tributary to our rich valleys; and by a natural reaction, the capital and agricultural products of the valleys will cause the wild and sterile mountains to resound with the cheerful and happy music of the loom and the anvil." - Owen G. Gates, businessman from the 1850s.